



**EYE-ONE** COLOR MANAGEMENT SYSTEM  
from zero to color in no time!

**EYE-ONE** Display 2

**EYE-ONE** Design

**EYE-ONE** Photo

**EYE-ONE** Proof

**EYE-ONE** XT

**EYE-ONE** iO



**eye-one**<sup>®</sup>  
color management system



## Why do you need color management?

Color management is essential for today's complex digital imaging technologies. There are so many variables: cameras, scanners, displays, printers, customer files, legacy documents, media and ink types – the list goes on and on. You need a flexible solution that anticipates challenges like these:

- Accurate on-screen and projected color
- Confidence in your digital camera files, scans and customer-provided colors
- Reliable match from monitor to printer
- Consistency and repeatability from print to print and printer to printer
- PANTONE® and spot color measurement and output



Eye-One now solves your color issues faster than ever with the new "Accelerated" Eye-One Pro, letting you concentrate on what you do best – create! Here's how it works: Eye-One tools are used to create and edit color profiles for all your color devices including scanners, monitors, digital cameras, digital projectors or printers. These profiles which are very much like individual fingerprints of each device, are then applied in your applications, driver or RIP to get your color correct. All of today's professional imaging and design tools support color management profiles, so it's easy to implement in your workflow!

Whether you're a designer, photographer, prepress house or print provider, there is an Eye-One solution designed to meet your critical color concerns.

# Eye-One System

## From zero to color in no time.

Eye-One packages are the fastest, smartest and easiest to use color management solutions — with the best, overall, complete out-of-box user experience on the market today! Eye-One solutions are designed for the unique needs of creative professionals who depend on color throughout their ecosystem. And, it is the one system comprehensive enough to be the only color management solution your company will ever need.

## For monitor calibration,

choose from two options in hardware:

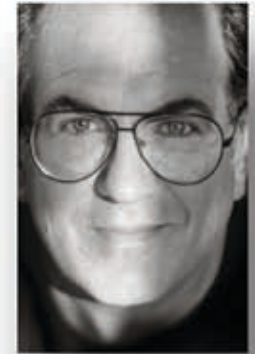
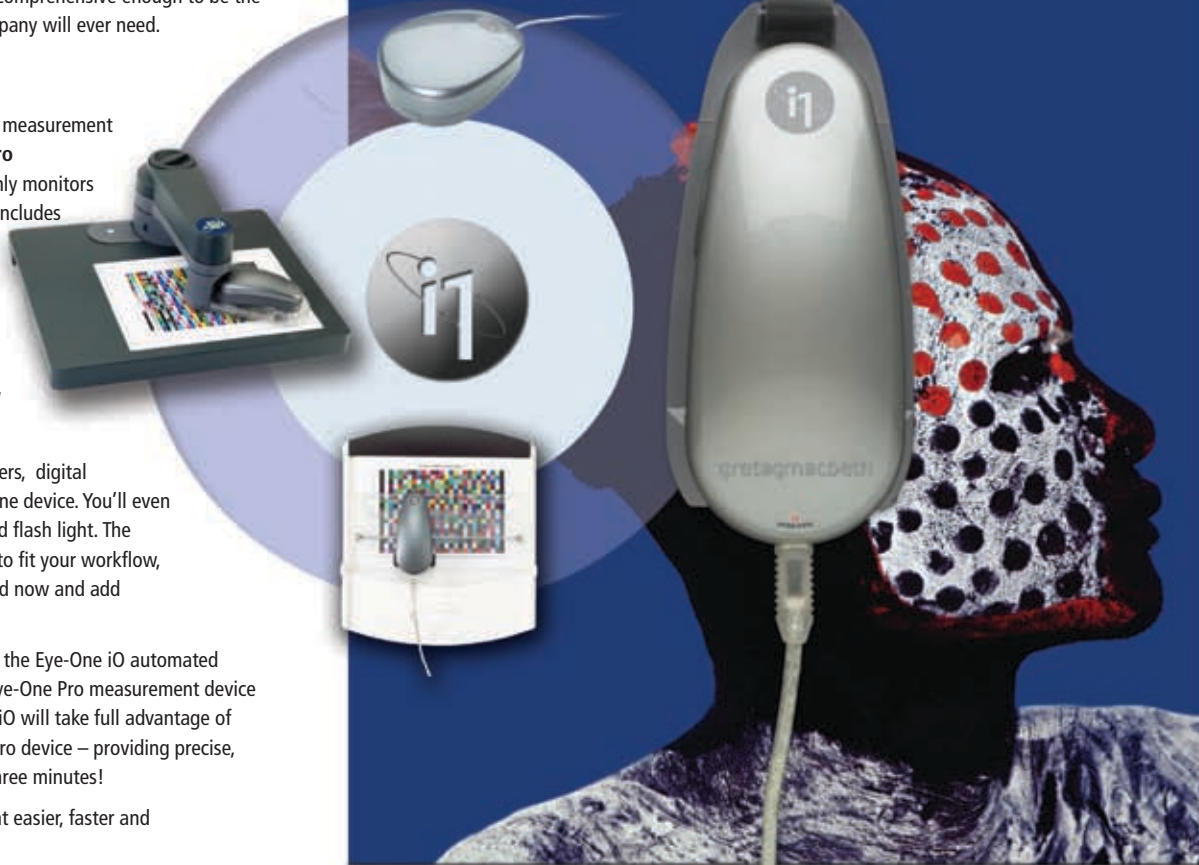
the **Eye-One Display2** monitor only color measurement device or the new accelerated **Eye-One Pro** spectrophotometer which measures not only monitors but a host of other devices. Each solution includes Eye-One Match 3 software. Together, both hardware and software form the heart of the Eye-One Color Management System.

**For profiling all your workflow devices, there's a NEW Accelerated Eye-One Pro Device with a NEW and IMPROVED ruler!**

Calibrate all your monitors, scanners, printers, digital projectors and digital cameras – all with one device. You'll even be able to capture spot colors, ambient and flash light. The Eye-One Pro is sold in packages designed to fit your workflow, so purchase only the functionality you need now and add modules as your needs increase.

Automating your Eye-One Pro is easy with the Eye-One iO automated scanning table. Now, anyone owning an Eye-One Pro measurement device can add automation at any time. Eye-One iO will take full advantage of the enhanced speed of the new Eye-One Pro device – providing precise, automatic chart measurements in under three minutes!

Eye-One solutions make color management easier, faster and incredibly precise.



**Eric Meola, Photographer**

*Until I started using all the GretagMacbeth Eye-One modules, I was shooting in the dark, not knowing exactly how the colors on my monitor would translate in the "real world". Now I know that what I see on my monitor, or in my prints, is exactly what someone else is going to see. Now that I use GretagMacbeth's Eye-One solutions, and I've seen the results, I wouldn't dream of not using them. The Eye-One solutions are as essential as a computer—once you've tried them, you're booked on precise, repeatable results.*

[www.ericmeola.com](http://www.ericmeola.com)  
Cover photo by Eric Meola

## Choosing the right Eye-One solution

Eye-One Display 2 is where reliable and affordable color begins. This powerful, compact monitor profiling solution is an excellent entry point for anyone who depends on accurate on-screen color. Profiling your LCD, CRT or laptop display means that you'll finally see colors as they actually are. Establishing defined settings throughout your studio and at your customer's site means that everyone will see your color the same way. Ideal for photographers, creative directors, publishers, and designers working in ad agencies and corporations.

Eye-One Design is the entry level color management solution of choice for freelance designers, small creative firms and small print shops. With it you can quickly and easily create color profiles for displays, RGB printers and CMYK printers. And with Eye-One Share software you can easily measure and share spot and PANTONE® colors. If you're looking to get a better color comp from your desktop printer, then Eye-One Design can get you started. For color critical work, such as in high-end proofing or photo imaging, simply upgrade your printer module to take advantage of the full test chart capabilities in both RGB and CMYK output.

Eye-One Photo is the ideal solution for the RGB workflow of photographic professionals. Profile and manage your entire digital color workflow from input through output, including digital cameras, scanners, monitors, printers and projectors. RGB printer profiling creates excellent output profiles, which can be further fine-tuned using Eye-One Editor. With the Digital Camera module you can create accurate digital camera profiles for different photo tasks with the Easy or Advanced Mode. The included Mini ColorChecker and ability to measure lighting conditions will help you lock down consistent, reliable color in any shooting scenario.

The Eye-One Photo SG includes all the same great features as Eye-One Photo, plus the Digital ColorChecker SG.

Eye-One Proof offers a sophisticated solution for CMYK print shops and design firms requiring robust color needs. Ensure accurate, consistent color from scan to monitor to proof and final print. The CMYK output profiling makes this the best package for anyone using a Postscript RIP. Other features include the ability to profile projectors, edit profiles, measure and share spot and PANTONE® colors and measure lighting conditions.

Eye-One XT bundle is for those who want it all. All Eye-One Pro capabilities, options and accessories are included in this package. Eye-One XT is perfect for companies looking for a single-source solution that ties together all of their color controls. Includes profiling of scanners, digital cameras, displays, RGB and CMYK printers, projectors, as well as profile editing and measurement of light, spot and PANTONE® colors. In addition, the package includes the Eye-One Platinum Protection, an extended warranty up to 3 years and service package, including Express Replacement, for your Eye-One Pro device. You'll even receive a free day of color management training at one of our training facilities to understand how to implement a complete color managed workflow.

If you're new to digital color:

### Eye-One Display 2



If you're a graphic designer or creative in need of better comps:

### Eye-One Design



If you're a photographer or photo finisher:

### Eye-One Photo



If you're an agency or design boutique requiring precise presentations, a small prepress house, in-house repro department, quick print shop, print-for-pay or large format printer:

### Eye-One Proof



If you want the ultimate Eye-One package:

### Eye-One XT



Based on different markets and requirements, we've put together five Eye-One packages for you to choose from. Regardless of where you start, Eye-One offers a clear upgrade path.

## One Device does it all

### Eye-One Pro Spectrophotometer

Eye-One sets a new stage for speed and ease-of-use, putting leading edge technology in your hands.

The defacto industry standard Eye-One solutions just got better with super fast measurements, greater patch recognition and, of course, no waiting! The new accelerated Eye-One spectrophotometer is not only optimized to read twice as fast, but is also outfitted with new Teflon® pads, creating a smoother gliding action. Together with Eye-One Match software, users click, swipe and read color targets almost instantaneously. Reading patches is fluid and effortless—with no pauses or hesitation at the end of rows.

With the Eye-One Pro you can measure and control every color device in your workflow. Connected with just a USB power cord, Eye-One Pro can profile monitors, scanners, printers, digital cameras and projectors. Plus, you can capture color from a physical swatch or measure and capture your flash and ambient lighting conditions – it's all easy with your Eye-One!

### Eye-One iO Automated Scanning Table

If you plan to measure a lot of charts, Eye-One iO is a must have. iO is an automated chart-reading table that makes measuring color swatches hands-free and accurate. When you dock your Eye-One Pro device into the iO, your Eye-One is transformed into a tireless color measurement assistant. And of course it will take full advantage of the increased speed of the new accelerated Eye-One Pro for the fastest chart measurements. And you'll still be able to use your Eye-One to profile all your other devices – simply undock and you're ready to go.

Measure any substrate up to 10 mm, including:

- photo paper
- fine art rag
- poly bag
- textile
- corrugated stock
- ceramic

## Software made easy

### Eye-One Match 3

Eye-One Match software is the brains behind the Eye-One system. It offers the easiest-to-use interface, with simple on-screen help guides to help the user breeze through the process.

Every Eye-One package includes the same version of Eye-One Match, but each has specific profiling modules enabled. That means no matter which version of Eye-One you buy, you can always upgrade Eye-One Match with a purchased access code to meet your growing needs.

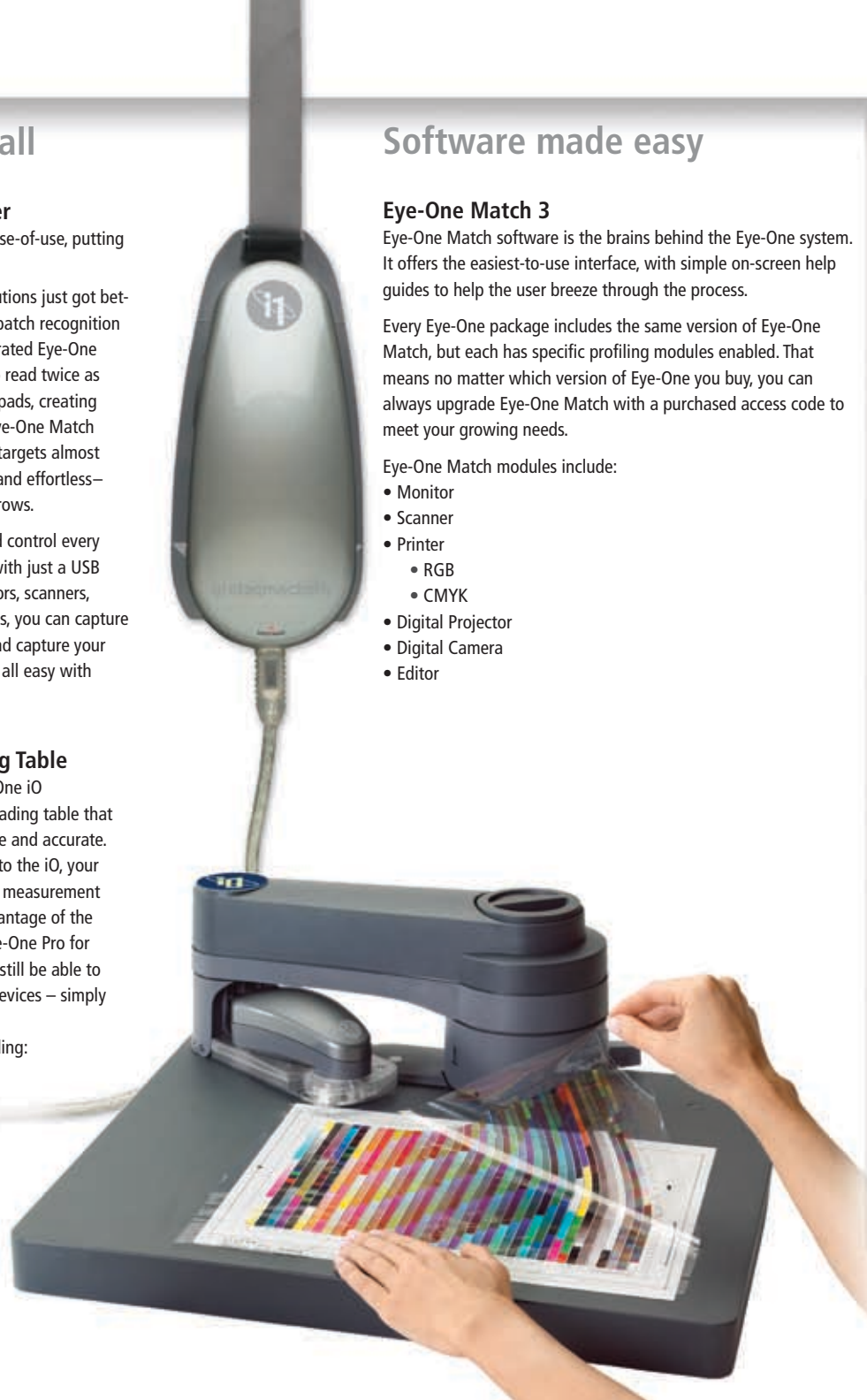
Eye-One Match modules include:

- Monitor
  - RGB
  - CMYK
- Scanner
- Printer
- Digital Projector
- Digital Camera
- Editor

## NEW! Eye-One Ruler and Carry Case

Every Eye-One Pro solution now ships with a newly designed sophisticated ruler system. The enhanced Eye-One ruler enables ease-of-use with just one hand, making chart measurements extremely fast and easy. Use the ruler as a stand-alone or with the included white-surfaced, sturdy, foldable back-up board. Now rapid, error-free measurements are a certainty with the Eye-One ruler, especially when accompanied by the accelerated Eye-One pro device constructed with a Teflon base for smooth gliding!

As an added feature to your color management system, your Eye-One Pro will arrive in a new water-resistant, non-abrasive canvas carrying case with shock-absorbing foam padding, making travel with your Eye-One system a snap. Go from Zero to Color in no time – both you and your Eye-One!





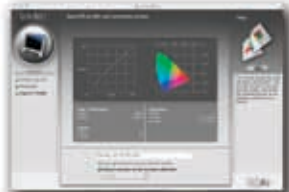
**Greg Gorman, Photographer**

*Working with the Eye-One system, I am assured a complete color managed work-flow from start to finish. From accurate monitor calibration to superb printer profiles, the Eye-One delivers the confidence I need in my digital photographic workflow.*

*And now, being able to calibrate my digital projector with the Eye-One Beamer, I no longer have to worry about my on-screen imagery for my digital presentations.*

*The Eye-One is a total solution for all of my color management needs!*

[www.greggormanphotography.com](http://www.greggormanphotography.com)



## Software Modules

Eye-One Match is comprised of six software modules. All Eye-One solutions contain one or more modules, and any module can easily be added at any time if it is not included in your original solution of choice.

### Monitor Module

- Profile CRT, LCD and Laptop Displays in Easy or Advanced mode
- NEW! Create profiles for any ambient light condition for optimal viewing for color critical work
- NEW! Utilize reference profiles to match all monitors in your workgroup
- NEW! Unlimited gamma white point and luminance settings including
  - native gamma
  - measure luminance as target
- NEW! Validate and trend monitor performance
- Chromatic adaptation formula for a closer visual match of different monitors (or of different settings on one monitor) with different white points
- Gray balance optimization for more neutral and better defined grays
- Profile summary report ideal for post profile analysis
- Profile reminder to ensure true and reliable color over time
- Push Button Calibration (PBC) for one-step profiling for industry leading monitors

### Scanner Module

- Supports both reflective and transmissive targets (reflectance target included)

### Printer Module

- New "Colorful" Gamut Mapping – based on ProfileMaker 5.0.5 – provides unmatched quality for smoothness and shadow detail
- Semi-automated scanning method for test charts – measure 300 patches in less than a minute with Eye-One Pro
- Supports all types of RGB and CMYK devices (when function is activated as indicated by package)
- Automatic detection of RGB or CMYK printer
- Print test charts directly from software application – no need to launch separate program
- Visual display of measured data provides instant feedback during measurement process
- Automated scanning method with Eye-One iO
- Enables RGB Easy and CMYK Easy (small test chart) profiling in every package

### Digital Projector Module

- Build an accurate on-screen profile in just a few minutes
- Designed for the creative, non-technical user
- Optional Beamer Holder provides more convenience

### Digital Camera Module

- Create digital camera profiles for different photographic tasks
- Easily create ICC camera profiles in Easy or Advanced Modes, with the ability to modify for contrast, exposure, color saturation and adjustments of shadows and highlights.

### Profile Editor Module

- Edit profiles with the simple editing functions for the most popular editing needs



## Services and Training



### Eye-One Platinum Protection

Your Eye-One deserves care and attention. For extended coverage and complete service, upgrade your standard X-Rite warranty to a three-year extended warranty. Plus you'll get Express Replacement which guarantees next-day replacement of

your Eye-One hardware. You also receive:

- Accidental damage protection
- Free annual accuracy verification
- 10% off all X-Rite Color Services classroom or on-site training programs



### Training Classes

Looking for help in implementing color management into your entire digital workflow? Attend one of our regularly scheduled hands-on training workshops, offered through our Color Services business unit. Customized training, output profiling and workflow integration services are also available on-site at your location, worldwide. Or visit our website for a complete listing of various color seminars being offered in your local region.

[gretagmacbeth.com](http://gretagmacbeth.com) / [xrite.com](http://xrite.com)

## Eye-One Components

Every Eye-One solution includes a selection of hardware, software and accessories.



### Hardware

**Eye-One Display 2** – a colorimeter designed for profiling of CRT, LCD and laptop display, plus measures and captures ambient light



### New Accelerated Eye-One Pro

Spectrophotometer – optimized to read twice as fast, 10 nm optical resolution instrument used to measure and profile any device, plus measure spot colors and flash/ambient light



### Software

**Eye-One Match** – Profile creation software: Monitors • Scanners • Printers Digital Projectors • Digital Cameras



**Eye-One Editor** – Basic profile editing software

**Eye-One Share** – Build and communicate custom color palettes and capture spot color and light (ambient and flash)

### Extended warranty

**Eye-One Platinum Protection** – extended warranty bundle for 3 years coverage and express replacement service if ever needed



### Accessories

**NEW! Chart measurement ruler** – Easy-to-use manual strip reader included with all Eye-One Pro solutions



**NEW! Carrying case** – soft sided case protects your investment and easily transports your Eye-One Pro system anywhere you go



**Beamer Accessory Kit** – Eye-One Beamer holder for projector profiling



**NEW! Eye-One iO Automated Scanning Table** – for automated hands-free chart measurement. Handles any substrates up to 10 mm – photo, fine art rag, textile, poly bag, corrugated and ceramic. iO will take full advantage of the enhanced speed of the new Eye-One Pro device for the fastest measurements!



### Eye-One Pro Accessories –

- Spot measurement holder
- Monitor holder
- Ambient light measurement head



**Digital ColorChecker SG and Mini ColorChecker** color reference charts

## Related Products

When you need even more robust color management capabilities such as custom measuring and comparing, press profiling, custom target creation or other special needs, then consider upgrading to GretagMacbeth ProfileMaker software solutions that offer different levels of flexibility.

### PM5 Photostudio

for the studio photographer

### PM5 Publish

for publishing

### PM5 Publish Plus

for multi-color publishing

### PM5 Packaging

for flexo, gravure, offset and inkjet n-color printing



### ColorChecker® Charts

Professional photographers rely on ColorChecker brand test targets to ensure accurate color reproduction.

**ColorChecker Standard** – original 24 patch

**Mini ColorChecker** – pocket size version of original

**Custom White Balance** – for accurate white reproduction

**3-Step Gray Scale** – for balancing images

**Digital ColorChecker SG** – optimized for digital camera profiling (required to create profiles with Eye-One Match and ProfileMaker Digital Camera modules)



Please refer to chart in back of brochure to determine which components are included or optional in your solution of choice.



With Color Management



Without Color Management

## More time to design

The creative process has been streamlined for designers working in a digital environment, but has also presented challenges in trying to maintain accurate, precise color. Without the proper tools and know-how, designers have historically passed the color responsibility upstream and depended upon the print provider to control their color. But not any more – you can take complete control!

Eye-One color management systems enable designers to do what they do best: design – by making it easy to control and manage color throughout the entire workflow. Beginning with the most critical device – an accurately profiled monitor, the creative process takes on true-to-life colors. From there Eye-One can control scanned artwork, images captured with a digital camera, desktop printers, high-end proofers and commercial presses to translate color from one device to the next, to the next, with ease.

And the good news? All the applications used by designers on a daily basis understand the importance of accurate color and fully support color management! Build your profiles with Eye-One and use them in QuarkXPress®, Photoshop®, Illustrator®, InDesign®, Acrobat® and other popular software applications. This means that you no longer have to present your comps with excuses for color shifts from your desktop printer, it means that the digital image you imported from your photographer into your layouts can reproduce with authenticity, and it also means that you no longer have to pay for costly tweaks on press. You can now virtually softproof your work on your monitor and know exactly what you'll get on press! Eye-One is the ultimate "what-you-see-is-what-you-get" tool.

## New "Small Test Chart" technology with Eye-One Design

For those just starting out in color management, Eye-One Match features a special "small test chart" capability. With this new technology you can quickly and easily create a perceptual color profile by reading just a few rows of color swatches from a given output device. Within the Eye-One Match application, you simply print the small test chart named RGB Easy or CMYK Easy and then scan it in using your Eye-One. Eye-One Match does the rest!

This "small test chart" technology uses a revolutionary, patent-pending approach which combines an internal pre-linearization and creation of a virtual large test chart. We then apply the most sophisticated profiling techniques to fine tune the gray axis. The resulting profile is based solely on perceptual rendering – the ideal solution for entry level color management and for producing better color comps.



## Share Colors with others

Every Eye-One package includes Eye-One Share – a complete color workshop on your desktop. It's the perfect creative tool for measuring single colors, mixing them, comparing them and converting them to any color scenario you can imagine.

With Eye-One Share you can easily:

- Create, evaluate and convert colors
- Click and measure any color (from a print, fabric, paint, anything)
- Mix and build color blends and tints
- Check to make sure that color will reproduce accurately
- Find the closest PANTONE® color
- Access the complete digital Pantone® library
- Create custom color palettes
- Share the color with other users – coworkers, project team and clients
- Export the color as a palette to use in other applications

Eye-One Share also enables you to measure both flash and ambient light, build a lighting library and simulate color viewing under the different lighting conditions. You can even check the quality of the light in your light booth and working environment.

It's perfect for creatives, because, not only is the entire PANTONE® library of colors included, but you can build your own custom color palettes from measured color swatches. You can create shades and blends of both the measured and existing library colors. You can even export standard color palettes for the major desktop publishing applications.

With its enhanced CxF capabilities, Eye-One Share connects software and hardware, enabling you to transfer your colors throughout the complete workflow from Creative to Prepress to Pressroom.

Whether you own an Eye-One or not, you and your clients can take advantage of many cool features of this FREE software – downloadable at [i1color.com](http://i1color.com).



**Howard Simkins, Professor, Coordinator of Computer Technology, Sheridan Institute of Technology, School of Animation Arts and Design**

*It is very hard to be successful in today's creative arts industry without knowing and using colour management. It is an essential element in the education of creative professionals, and using GretagMacbeth's suite of products is an easy first step to implementing a successful colour managed workflow.*

[www1.sheridaninstitute.ca](http://www1.sheridaninstitute.ca)



**Vincent Versace, Photographer**

*Color is the backbone of my art. If my color is not right, then what I saw is not being conveyed. The beauty of the Eye-One system is that, across the board, I can get accurate color on my monitors, scanners, printers and digital projectors.*

*The elegant interface is so easy to use and is the same for Eye-One Display 2, which I carry with me everywhere I go!*

[www.versacephotography.com](http://www.versacephotography.com)

## Eye-One Packages

### Eye-One Display 2 is a great way to get started in color management.



It is the revolutionary display color management system giving you professional level color management on any type of monitor – CRT, LCD and even laptops – in an easy to use and affordable package.

### Eye-One Design is an affordable, entry level color management system for creative professionals.



With your Eye-One Pro you can obtain accurate color on all your displays and easily build profiles for your printers. And you'll be able to take full advantage of Eye-One Share software to measure, mix and share spot colors! You won't need to make excuses for color again.

Eye-One Design incorporates new "small test chart" technology which makes profiling both RGB and CMYK printers a snap. The small test charts are quick, simple and easy to use – by reading just a few rows of patches, you won't believe how good your color can look on your desktop printer. For more critical color needs like proofing or high end photo color, upgrade to an advanced RGB or CMYK printer profiling module.

### Eye-One Photo is the most complete, full-scale color management system for photo professionals.



With your Eye-One Pro you can measure and control color on displays, digital cameras, scanners, digital projectors and printers of all types. You can capture both flash and ambient light and easily measure spot colors. With Eye-One Photo you'll be in total control of your color throughout your digital photographic workflow!

Eye-One Photo features professional level color profiling based on ProfileMaker algorithms for your RGB inkjet, dye-sub or photo imaging printers.

And, as an extra bonus, you'll get the popular Mini ColorChecker for color evaluation in every shoot!

**Eye-One Photo SG** is a bundle solution that includes all the same features as Eye-One Photo, plus the Digital Color Checker SG.

### Eye-One Proof is the ideal color management system for small prepress and print professionals.



With your Eye-One Pro you can measure and control color on displays, scanners, digital projectors and printers of all types. It's not just for proofing! You can profile all of your RIP, printer, ink and media combinations for the best color every time. Easily measure spot colors and capture both flash and ambient light. Eye-One Proof features CMYK profiling for professional level color from your CMYK RIPs and printers. You can also create perceptual color profiles for RGB printers using the "easy" test chart, as well as the ability to edit your profiles with Eye-One Match Profile Editor.

### Eye-One XT is the ideal bundle that does it all.



With Eye-One XT you can handle just about any color management issue or problem that comes your way. You can measure and control color on digital cameras, scanners, displays and printers of all types – even projectors with the complete Eye-One Beamer kit included. Eye-One XT includes all test charts for your various printers, so no matter what, you've got the solution to match. You'll appreciate the comfort of having the extended warranty of three years, express replacement service if your unit needs repair, and a full one day training at one of our facilities. If you want the flexibility to handle any color situation, any time, then Eye-One XT is for you. Maximize the value of your Eye-One investment.

## Features and Benefits

- Display-optimized colorimeter for fast, accurate LCD and CRT profiling. Special laptop mode ensures more neutral laptop LCD profiles.
- Easy-to-use, step-by-step software interface
- NEW! Utilize reference profiles to match multiple monitors in your workgroup
- NEW! Unlimited gamma whitepoint and luminance settings including native gamma and measure luminance as a target
- NEW! Validate and trend monitor performance
- NEW! Adapt profiles for any ambient light conditions
- Optimized adjustment of hardware controls like brightness and color temperature
- Push button calibration for 1-step profiling of industry leading monitors
- Use at multiple workstations – no additional licensing fee
- Highest repeatability for consistent calibration and profiling results
- Highest sensitivity in dark areas for better control in shadow detail and more neutral gray scale

- Profile monitors and printers in small test chart mode
- Measure, mix and share spot colors and custom color palettes with the powerful Eye-One Share software
- Ambient light measurement for verifying viewing conditions
- Easy-to-use, step-by-step software interface
- NEW! Create monitor profiles for any ambient light condition
- Laptop mode for better, more neutral laptop LCD profiles
- NEW! Utilize reference profiles to match multiple monitors in your workgroup
- Easily upgrade functionality as your needs grow through software codes
- Upgradeable to full automation with Eye-One iO scanning table (Requires full RGB or CMYK module)

- Profile monitors, scanners, printers, digital projectors and digital cameras
- Easy-to-use, step-by-step software interface
- NEW! "Colorful" gamut mapping with unmatched quality for smoothness and shadow detail – Full RGB and CMYK Easy (small test chart)
- NEW! Create monitor profiles for any ambient light condition
- Laptop mode for better, more neutral laptop LCD profiles
- NEW! Utilize reference profiles to match multiple monitors in your workgroup
- Ambient light measurement for verifying viewing conditions
- Adjust contrast, exposure, color saturation, shadows and highlights with Digital Camera module
- Profile editing with Eye-One Editor
- Measure, mix and share spot colors with Eye-One Share
- Upgradeable to full automation with Eye-One iO scanning table

- Profile monitors, scanners, printers and digital projectors
- Easy-to-use, step-by-step software interface
- NEW! "Colorful" gamut mapping with unmatched quality for smoothness and shadow detail – Full CMYK and RGB Easy (small test chart)
- NEW! Create monitor profiles for any ambient light condition
- Laptop mode for better, more neutral laptop LCD profiles
- NEW! Utilize reference profiles to match multiple monitors in your workgroup
- Ambient light measurement for verifying viewing conditions
- Profile editing with Eye-One Editor
- Measure, mix and share spot colors with Eye-One Share
- Upgradeable to full automation with Eye-One iO scanning table

- Profile monitors, scanners, printers, projectors and digital cameras
- Easy-to-use, step-by-step software interface
- NEW! "Colorful" gamut mapping with unmatched quality for smoothness and shadow detail – Full CMYK and full RGB
- NEW! Create monitor profiles for any ambient light condition
- Laptop mode for better, more neutral laptop LCD profiles
- NEW! Utilize reference profiles to match multiple monitors in your workgroup
- Ambient light measurement for verifying viewing conditions
- Adjust contrast, exposure, color saturation, shadows and highlights with Digital Camera module
- Profile editing with Eye-One Editor
- Measure, mix and share colors with Eye-One Share
- Eye-One Platinum Protection extended warranty for three year period
- One-day classroom training at designated facility
- Upgradeable to full automation with Eye-One iO scanning table

**MEASUREMENT DEVICES**  
Accelerated Eye-One Pro  
Eye-One Display 2

**FUNCTIONALITY**

- Spot Mode Color Measurement
- Scan Mode Color Measurement
- Light Measurement
- Monitor profiling
- Scanner profiling
- RGB Easy (small test chart)
- CMYK output profiling
- CMYK Easy (small test chart)
- Digital Camera profiling
- Digital Projector profiling
- Eye-One Editor for basic profile editing to create, evaluate and communicate colors (including Color Picker functionality)
- Platinum Protection - warranty and service
- One Day Classroom Training
- Upgrade Voucher

**ACCESSORIES**

- Mini ColorChecker Chart for digital camera module
- ColorChecker Chart for digital camera module
- Beamer Accessory Kit
- Easy to use ruler - for chart measurement in scan mode
- Eye-One iO Automated Scan Table for automated chart measurement and spot color guide
- Scan target, monitor holders
- Carrying Case

							Eye-One Display 2			
									Eye-One Design	
										Eye-One Photo
										Eye-One Photo SG
										Eye-One Proof
										Eye-One XT

**Add automation at any time!**

**FAST  
AUTOMATED  
VERSATILE  
AFFORDABLE**

*Increase your productivity with precise, automatic chart measurements in under 3 minutes! Once you have an Eye-One Pro device, you can add automation at any time. The new iO measures up to 400 patches per minute, saving you both time and money. Measuring a variety of substrates up to 10 mm, the iO not only measures test charts on all your photo papers, but it will even provide profiles for poly bag, fine art rag, ceramic, corrugated stock and varying textiles!*

included    optional

1) monitor only device, therefore no reflectance color measurement functionality together with Eye-One Share  
 2) upgrade voucher to Eye-One Pro Solutions  
 3) upgrade to Eye-One Match modules  
 4) upgrade to full test chart mode prior to adding iO  
 5) software only  
 6) upgrade to ProfileMaker 5 solutions

## Technical specifications for Eye-One®

### Eye-One Pro device

Spectral measurement device, supported measurement modes:	Reflectance single measurement Reflectance scanning measurement with automatic patch detection Emission: radiance measurement (monitor measurement) Emission: irradiance measurement (light measurement)
Spectral analyzer:	Holographic diffraction grating with 128 pixel diode array
Optical resolution:	10nm
Physical sampling interval:	3.5nm
Spectral data:	Range: 380 ... 730 nm in 10 nm steps
Measurement aperture:	4.5mm diameter
Interface:	USB 1.1
Physical dimensions:	Length 151 mm, width 66 mm, height 67 mm (6 x 2.6 x 2.6 inches)
Weight:	185 g (6.5 oz)
Accessories included:	Calibration plate, USB cable, CRT monitor holder, flat panel holder, positioning target, scanning ruler, and light measurement head
Measurement geometry:	45°/0° ring illumination optics, DIN 5033
Light source:	Gas filled tungsten (Type A)
Physical filters:	No or UV cut (Filters not exchangeable)
Inter-instrument agreement:	Average DE*94 0.4, max. DE*94 1.0 (Deviation from GretagMacbeth manufacturing standard at 23°C for single measurement mode on 12 BCRA tiles (D50,2°))
Short-term repeatability:	DE*94 <= 0.1 (D50,2°), with respect to the mean CIE Lab value of 10 measurements every 3 seconds on white
Data format:	Spectral radiance (mW/nm/m2 /sr); Luminance Y (cd/m2)
Measurement range:	0.2 ... 300 cd/m2
Short-term repeatability:	x,y: +/- 0.002 typical (CRT 5000°K, 80 cd/m2)
Type:	Cosine-corrected diffuse light measurement head
Diameter:	6.0 mm
Data format:	Spectral irradiance (mw/nm/m2), Illuminance Y (lux)
Power supply:	Device powered by USB. No additional charger or battery required. USB 1.1 high power device.
Eye-One Ruler:	33.5 cm x 17 cm
Eye-One Ruler Board:	35.5 cm X 26.5 cm folded 35.5 cm X 40 cm unfolded

### Eye-One Display 2 device

Device Type:	Three channel colorimetric sensor
Interface:	USB data and power supply
Data format:	Luminance (cd/m2), chromaticity coord. x, y (CIE 1931)
Refresh rate:	Monitor frequencies: 40 Hz to 150 Hz
Physical dimensions:	Length 84mm, width 64mm, height 35mm
Weight:	Measurement device 131 g, counter weight 33 g
Measurement range:	Luminance: Black point: 0.02 cd/m2 White point: 3,000 cd/m2 Illuminance: Suitable for use in Graphic Display Proofing per ISO/CD 12646 Standard With respect to Eye-One Pro on reference monitor (white 6500K), chromaticity coord. x,y +/-0.004 Luminance 0.3% at Y=75 cd/m2 (white 6500K) Chromaticity coord. x,y <+/-0.001 at Y=75 cd/m2 (white 6500K)
Accuracy:	Power Required Powered by USB, no additional charger required USB low power class device
Short-term repeatability:	
Power conditions:	
<b>Eye-One iO</b>	
Paper/Chart/Positioning	
Positioning Area:	32 x 23 cm, 12.6" x 9" (Width x Height)
Media Thickness:	Max. 10 mm, 0.39"
Patch Size: Min:	6 mm x 7 mm (Width x Height)
Chart Measurement	
Measurement Speed:	> 400 patches / Minute, IT8.7/3 chart (924 patches) <= 2.2 minutes
Calibration:	Automatic on internal calibration reference
General	
Interface:	USB 1.1
Power Supply:	Auto rating 100 to 240 VAC, 50 / 60 Hz
Physical Dimensions:	510 x 460 x 170 mm, 20 x 18.1 x 6.7 (Width x Depth x Height)
Weight:	4.5 kg, 9.9 lb (without Eye-One Pro device)
Measurement background:	White

### System Requirements

- Macintosh®
- Power Mac G3 or higher, 300 MHz
  - Mac OS X 10.3 or later
  - 128 MB of available RAM
  - 100 MB of available hard disk space
  - Monitor resolution of 1024 x 768 pixels or higher
  - USB Support
- Windows®
- PC with 300MHz
  - Windows 2000, XP
  - 128 MB of available RAM
  - 100 MB of available hard disk space
  - Monitor resolution of 1024 x 768 pixels or higher
  - USB Support



### Seth Resnick, Photographer

*As professional photographers transition from film to digital, color management shifts from being an option to a necessity. Responsibility for accurate color has shifted from the client to the photographer. Without color management you simply have nothing. GretagMacbeth provides the tools so that a photographer today can maintain consistent and accurate color with an easy-to-use interface. I incorporate GretagMacbeth solutions into all aspects of my workflow; profiling monitors, creating paper profiles and for calibrating my LCD projectors. Quite simply, my entire workflow begins with GretagMacbeth's Eye-One.*

[www.sethresnick.com](http://www.sethresnick.com)

Switzerland:	t: +41 44 842 24 00, f: +41 44 842 22 22
United States:	t: +1 845 565 7660, f: +1 845 561 0267
Germany:	t: +49 61 0279 570, f: +49 61 0279 5757
United Kingdom:	t: +44 1928 280050, f: +44 1928 280080
Italy:	t: +39 0574 527755, f: +39 0574 527671
France:	t: +33 161 062 180, f: +33 134 620 947
Russia:	t: +7 095 502 92 65, f: +7 095 502 92 67
China (Hong Kong):	t: +852 2368 7738, f: +852 2368 6717
China (Shanghai):	t: +86 21 62676180, f: +86 21 62676832

Visit our World Wide Web Sites at [i1color.com](http://i1color.com), [gretagmacbeth.com](http://gretagmacbeth.com) and [xrite.com](http://xrite.com)  
™ Trademark of GretagMacbeth, now known as X-Rite. Part No. 42.01.39 (09/06).

Apple, Mac, the Mac logo, Macintosh and ColorSync are trademarks of Apple Computer, Inc., registered in the U.S. and other countries. Pentium is a registered trademark of Intel Corporation. Microsoft and Windows are registered trademarks of Microsoft Corporation. PANTONE® and other Pantone Incorporated trademarks are the property of Pantone Inc. All other trademarks are the property of their respective owners.

